



**INVESTEC GROUP**  
Praca - Nauka - B2B



**Language School**

**OPEN FOR ADMISSION  
2023**

### **About Us**


Learn Polish and English with us in the heart of Poland!




### **Facilities School**

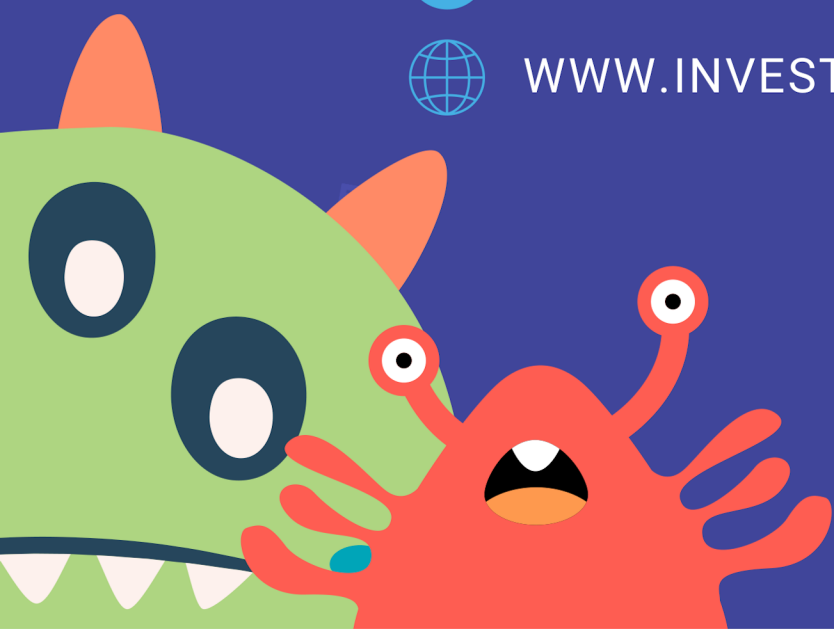
Classrooms, Computer Lab,  
Field, Bathroom, Nearby  
Centrum

**Speak to our admissions team  
and begin your language  
studies**

 BIAŁYSTOK (+48) 85 876 07 14

 PRZECLAW (+48) 17 780 56 56

 [WWW.INVESTECGROUP.PL](http://WWW.INVESTECGROUP.PL)



# Long Stay Programmes & Packages



## English Language



This course is perfect for developing fluency in English to that of a native speaker for those students who want to acquire peak levels of English before moving to another Country or pursuing a desired University or College Program in Poland. Students are followed throughout this extensive program by their instructors and through progress assessments as they advance from one level to the next. Long stay programs often lead to achieving internationally recognised qualifications.

COURSES	HOUR PER WEEK	DURATION OF COURSE	COST
INTENSIVE ENGLISH	20	1 YEAR	3000 EURO
BUSINESS INTENSIVE ENGLISH	25	1 YEAR	3500 EURO

**Speak to our admissions team  
and begin your language  
studies**



BIAŁYSTOK (+48) 85 876 07 14



PRZECŁAW (+48) 17 780 56 56



[WWW.INVESTECGROUP.PL](http://WWW.INVESTECGROUP.PL)



# Long Stay Programmes & Packages



## Polish Language



Explore new possibilities and increase your chances of university admission in Europe with our language and culture program! Throughout the program, students receive personalized attention from their instructors and undergo progress assessments as they advance from one level to the next. Long-term stays in our program often result in achieving the desired language proficiency and recognition of their language skills. Our instructors closely monitor the progress of each student, ensuring they receive the support and guidance necessary to achieve their language learning goals.

COURSES	HOUR PER WEEK	DURATION OF COURSE	COST
INTENSIVE POLISH	20	1 YEAR	3000 EURO
BUSINESS INTENSIVE POLISH	25	1 YEAR	3500 EURO

**Speak to our admissions team  
and begin your language  
studies**



BIAŁYSTOK (+48) 85 876 07 14



PRZECŁAW (+48) 17 780 56 56

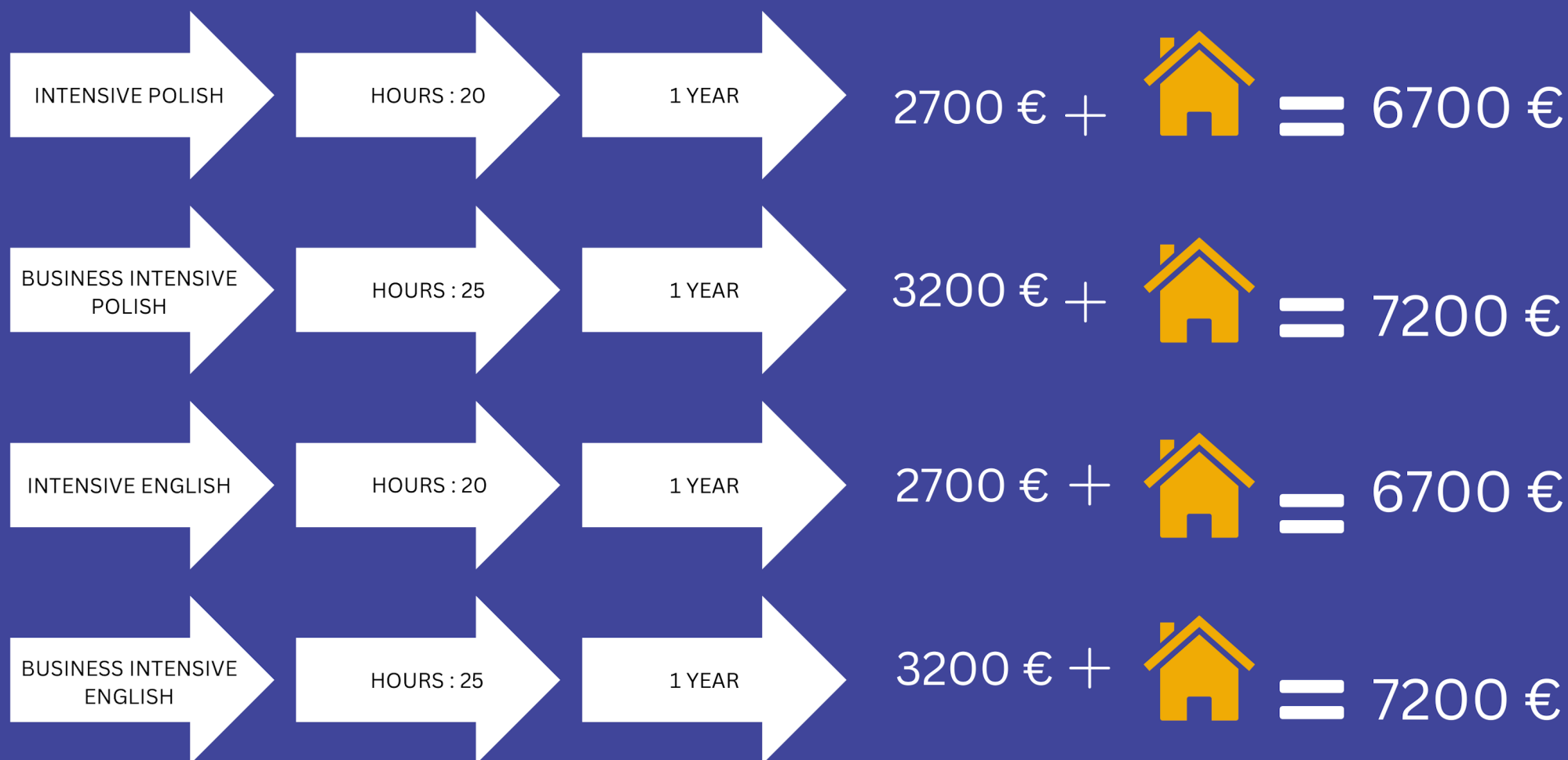


[WWW.INVESTECGROUP.PL](http://WWW.INVESTECGROUP.PL)



# COURSE & ACCOMMODATION COMBINATION PACKAGES

WITH NO SET START DATES, COURSE AND RESIDENTIAL COMBINATION PACKAGES ARE THE IDEAL CHOICE FOR STUDENTS WHO ARE STUDYING FOR A LONG PERIOD OF TIME AND WANT TO DIVERSIFY THE LENGTH OF THEIR DAILY LESSONS AND THE CHOSEN COURSE OF STUDY! THESE ALL-INCLUSIVE PACKAGES OFFER 1 PRICE FOR ALL REQUIRED SERVICES!



## TAKE NOTE



	<b>NON REFUNDABLE FEE</b> REGISTRATION: €100 VISA ASSISTANCE : €100		<b>OPENING HOURS:</b> Standard Season Monday - Friday 0830 - 1700 High Season Monday 0800 - 1730 Tuesday - Friday 0830 - 1730
--	---	--	---

# Studying while travelling

Learning a new language can be a challenging and rewarding experience, but it's not all about hitting the books. Taking students on a tour of top beautiful cities of Poland also has several benefits. Firstly, it can be a fantastic way for students to immerse themselves in Polish culture and see the language come to life outside the classroom.

## Kraków



## Warsaw



Additionally, exploring these cities can provide an opportunity for students to practice their language skills in real-life situations. A trip to top beautiful cities of Poland on successful completion of every 3 months. Visiting cities like Krakow, Warsaw, Malbork, and Gdańsk can give students a deeper understanding of Poland's rich cultural heritage and history.



## Gdańsk



## Malbork

# Other type of Accommodation



STUDENTS CAN OPT TO CHOOSE DIFFERENT ROOMING OPTIONS, TO CHOOSE BETWEEN DIFFERENT LEVELS OF PRIVACY WHETHER PREFERRING PRIVATE ROOM OPTIONS TO MORE COMMUNAL LIVING SPACES AND ROOMS.

ACCOMMODATION IS IN THE FORM OF SINGLE ROOMS, TWIN ROOMS IN A ROOM CLUSTER OR SHARED APARTMENTS. A STUDIO APARTMENT OPTION IS ALSO AVAILABLE CLUSTER APARTMENTS USE THE FACILITIES OF A COMMUNAL KITCHEN AND LOUNGE AREA. STUDENTS CAN CHOOSE A SINGLE ROOM, A SINGLE ROOM WITH AN ENSUITE, A TWIN ROOM OR A TWIN ROOM WITH AN ENSUITE IN A CLUSTER APARTMENT.

SHARED APARTMENTS OFFER THEIR OWN KITCHENETTE AND RELAXATION AREA. STUDENTS OPTING FOR A SHARED APARTMENT CAN CHOOSE A SINGLE ROOM OR A TWIN ROOM IN A SHARED APARTMENT.

## Terms & Conditions



### Payment Terms

Upon confirmation of booking and receipt of invoice, payment is to be made in full by Bank Transfer, Credit Card or Secure Online Payment via Stirpe as follows:

Up to 6 months prior to arrival date:

Balance to be settled 3 months prior to arrival date.

From 3 months prior to arrival date:

Full payment within seven (7) days of confirmation of booking.

**BANK TRANSFER:** Payment together with Bank charges on receipt of invoice. Bank details provided on invoice and listed below.

**ONLINE PAYMENT:** Pay securely through our link available in your invoice and email. Failure to comply with our payment terms will result in the cancellation of your application.

All fees are to be settled before the enrolment start date and no student will be allowed to start their course until full payment has been received



**INVESTEC GROUP**

Praca - Nauka - B2B



### **Cancellation Fees/Refund Policy**

You can request a modification, cancellation or refund by contacting us on [biuro@investecgroup.pl](mailto:biuro@investecgroup.pl) and quoting your reference number.

In the event that you cancel your booking the following refunds will apply:

For cancellations 30 days prior to course or accommodation start date (whichever comes first) investec will refund fees received as listed below less nonrefundable charges.

(Registration fees -

Visa assistance, Medical insurance fees if applicable - Administration charges)

30 days prior to arrival date - Full refund (excluding non-refundable charges/

\*cancellation fees for accommodation)

14 days prior to arrival date - 75% of invoice (excluding non-refundable charges/

\*cancellation fees for accommodation)

7 days prior to arrival date - 50% of invoice (excluding non-refundable charges/

\*cancellation fees for accommodation)

3 days prior to arrival date - 25% of invoice (excluding non-refundable charges/

\*cancellation fees for accommodation)

Cancellation 2 days prior to arrival and "no shows" - no refund

\*Hotel Accommodation - cancellation 28 days prior to arrival - no refund

Upon quote, Host Family Accommodation will only be made available for the first 48 hours following a request.

In cases of illness or holidays planned through the duration of the course, the head of school needs to be informed. Lessons missed for this reason will not be replaced or refunded.

[www.investecgroup.pl](http://www.investecgroup.pl)



**INVESTEC GROUP**

Praca - Nauka - B2B



### **Visas**

Students travelling on a VISA must plan ahead and check with their local Polish Embassy with regard to timings for VISA application.

**Investec Group** will issue a Confirmation letter, a Pro Forma invoice and a Letter of Acceptance for Visa application upon full payment.

There is a charge of €100 for Visa assistance.

Any additional cost incurred should documents be sent by courier are to be borne by the student

Cancellations after VISA refusal

Any cancellations due to VISA refusals

must be made in writing and communicated to [biuro@investecgroup.pl](mailto:biuro@investecgroup.pl) within three

(3) days of receipt of the refusal document sent by the issuing Embassy/Authority. In

the event of a refusal the following cancellation charges apply:-

7 days prior to arrival - 3 days host family/

Residence accommodation/ full stay hotel accommodation + \*non-refundable charges

Less than 7 days prior to arrival - 1 week

tuition + 1 week host family/Residence

accommodation/ full stay hotel accommodation + \*non-refundable charges\*

(\*Non-Refundable Charges include registration/Visa

Assistance/Courier/Admin

fees).





**INVESTEC GROUP**

Praca - Nauka - B2B



Cancellations or shortening of courses after Visa has been issued No refunds are

granted to students failing to arrive or who are absent during their course. Periods of absence are not compensated with free extensions at the end of the course. In the case of students being granted a visa, non-arrivals, late arrivals and periods of absence will be reported to the immigration authorities. For all other reasons, cancellations must be made in writing and the

following cancellations charges apply:-  
Between 1 - 21 days prior to arrival date -  
4 Weeks tuition and accommodation fees,  
Registration Fee and Admin charges will be retained.

For no-shows, or cancellation or shortening of courses after arrival date - no refund will be given.

Postponement of courses

In the event that, between 14-21 days prior to course start date the entry visa application approval is still pending students can opt to postpone their course to a later starting date within the current year against a fee of €145. On confirmation of Visa approval, cancellation policies above apply.

In case of visa not being granted after full and correct application, students may opt to file an appeal with the authorities.

[www.investecgroup.pl](http://www.investecgroup.pl)

## **PAYMENT DETAILS**

INVESTECGROUPSP.ZO.O.  
IBAN NO: PL0324900005453013129075  
ACCOUNT NUMBER: 0324900005453013129075

WWW.INVESTECGROUP.PL  
PRZEĆŁAW (+48) 17 780 56 56  
BIAŁYSTOK (+48) 85 876 07 14

ADDRESS  
UL. DWORCOWA 4/40, 39-300 MIELEC  
UL. KAWALERYJSKA 28/104, 15-324 BIAŁYSTOK  
UL. RYNEK 8, 39-320 PRZEĆŁAW

